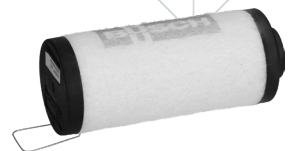
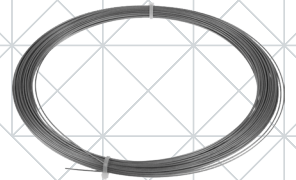
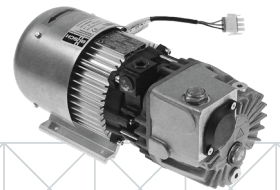


HENKELMAN VACUUM MACHINES SPARES

*The smart way of saving food
and money*



HENKELMAN VACUUM MACHINES SPARES



LF Code: 5121891
GEV Code: 698531, S0097284

SHOCK ABSORBER FOR LID 0400N

overall length 160 mm - holes
ø 6 mm

HENKELMAN 0810201, HENKELMAN
810201



LF Code: 7150819
GEV Code: 702445, LF7150819

SHOCK ABSORBER FOR LID 0650N

772245
overall length 240 mm

HENKELMAN 0810216, HENKELMAN
810216



LF Code: 5171697
GEV Code: 701302

SHOCK ABSORBER FOR LID 450N

overall length 240 mm
hole spacing 230 mm

HENKELMAN 0955003



LF Code: 7150818
GEV Code: LF7150818

SHOCK ABSORBER FOR LID 580N

TYP16-2 016 13996A
overall length 240 mm

HENKELMAN 0810215, HENKELMAN
810215



LF Code: 5171715
GEV Code: 704534

SHOCK ABSORBER FOR LID 900N

HENKELMAN 0810220



LF Code: 5171714
GEV Code: 704533

SHOCK ABSORBER FOR LID Lynx

HENKELMAN 0810203



LF Code: 5171726
GEV Code: 704539

PNEUMATIC CYLINDER ø 80x26 mm

HENKELMAN 0286008



LF Code: 5171455
GEV Code: 689015

SHOCK ABSORBER SUPPORT UPPER 6x12 mm

HENKELMAN 0065226



LF Code: 5171613
GEV Code: 691583

SILENCER BUSHING

external ø 57 mm - internal ø
51.5 mm
height 32 mm

HENKELMAN 0931230

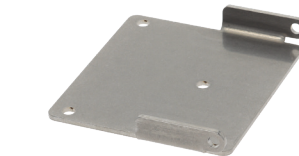


LF Code: 5171627
GEV Code: 692063

FILLING PLATE 740x490x20

for model F80 KL

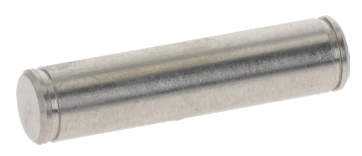
HENKELMAN 0307050



LF Code: 5122769
GEV Code: 702388, S0062184

HINGE 120x100 mm

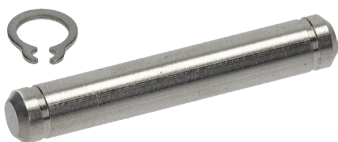
HENKELMAN 0390505



LF Code: 7137490
GEV Code: 702335, WB154244

HINGE PIN

HENKELMAN 0390512



LF Code: 7137489
GEV Code: 702322, WB154242

HINGE PIN ø 6 mm

HENKELMAN 0390510

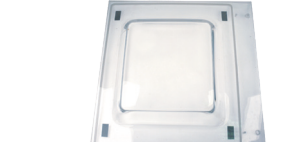


LF Code: 5171646
GEV Code: 692242

COVER 378x315x20 mm

for model JUMBO

HENKELMAN 0600100



LF Code: 7133209
GEV Code: 691586

COVER 670x670x300 mm

HENKELMAN 0900738, HENKELMAN
900738



LF Code: 7108996
GEV Code: 692062, S0091974

LID COMPLETE 475x460x75 mm

complete with gasket
for models B42/J42/H-200

HENKELMAN 0620011

HENKELMAN VACUUM MACHINES SPARES



LF Code: 7111138
GEV Code: 702175

**LID COMPLETE 487x435x70
mm**

HENKELMAN 0600108

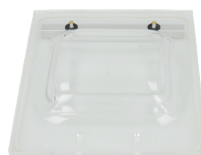


LF Code: 7109265
GEV Code: 704535, S0093822

**LID COMPLETE FOR VACUUM
MACHINE**

for models Jumbo/Boxer 42
XL-I

HENKELMAN 0900740



LF Code: 5171706
GEV Code: 702389

LID FOR VACUUM MACHINE

HENKELMAN 0600102



LF Code: 5169298
GEV Code: 702708, S0095907

LID FOR VACUUM MACHINE

HENKELMAN 0650005



LF Code: 5171416
GEV Code: 499346

**VACUUM PUMP 220-240V
0.55/0.66kW 50/60Hz**

type J21TV513
flow rate 8 m³/h

HENKELMAN 0431300

HENKELMAN VACUUM MACHINES SPARES



LF Code: 7150825
GEV Code: 370515

COIL 24V 12VA 50/60Hz

width 22 mm - height 30 mm
depth 28 mm

HENKELMAN 0280071, HENKELMAN 280071



LF Code: 5146838
GEV Code: 370508

MAGNETIC COIL 3-WAY 24V

hose-end fitting \varnothing 6 mm

HENKELMAN 0280024



LF Code: 5146839
GEV Code: 370519

SOLENOID VALVE BODY DN 2.8 mm

HENKELMAN 0280080



LF Code: 7132642
GEV Code: 370518

SOLENOID VALVE BODY DN 6 MM

HENKELMAN 0280078, HENKELMAN 280078



LF Code: 7130741
GEV Code: 370520

SOLENOID VALVE 2-WAY 24VAC

inlet 1/4"mm - outlet \varnothing 4 mm

HENKELMAN 0900858, HENKELMAN 900858



LF Code: 5171316
GEV Code: 370507

SOLENOID VALVE 2-WAY \varnothing 1/8" F 24V

DN 3.3 mm

HENKELMAN 0280021



LF Code: 5130531
GEV Code: 370510

SOLENOID VALVE 3-WAY \varnothing 1/4" F 24V

DN 4.4 mm - NBR membranes (water)
max. pressure 3 bar - max. temperature 90°C

HENKELMAN 0280052



LF Code: 7115945
GEV Code: 370506

SOLENOID VALVE 3-WAY \varnothing 1/8" F 24V

DN 2.8 mm

HENKELMAN 0280010



LF Code: 5171320
GEV Code: 370509

SOLENOID VALVE \varnothing 1/2" FF 24VAC

for water
max. temperature 85°C
max. differential pressure 7 bar
NBR membranes (water)

HENKELMAN 0280040



LF Code: 5171348
GEV Code: 370516

NUT M8x0.75 FOR SOLENOID VALVE

HENKELMAN 0280083



LF Code: 7125221
GEV Code: 370816

SOLENOID VALVE UNIT 24 VAC

inlet 1/2" - outlet 21 mm
2 coils type VA12 24V coil

HENKELMAN 0280026



LF Code: 5171628
GEV Code: 692064

SOLENOID VALVE UNIT 1/2" 24V

tube \varnothing 6mm
for model H200

HENKELMAN 0280032

HENKELMAN VACUUM MACHINES SPARES



LF Code: 5171299
GEV Code: 370920

SOLENOID VALVE UNIT 1/2" 24V

tube \varnothing 21mm
coil type VA12 J42

HENKELMAN 0280037



LF Code: 5171343
GEV Code: 370514

SOLENOID VALVE UNIT 1/2" 24VAC

3 coils VA12 - hose connection
 \varnothing 21 mm

HENKELMAN 0280029



LF Code: 7118641
GEV Code: 370800

SOLENOID VALVE UNIT 24VAC

inlet 1/2"
outlet 10.5 mm - 2 coils type
VA12 coil

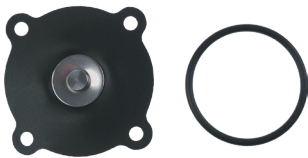
HENKELMAN 0280035



LF Code: 5171530
GEV Code: 691576

VENTILATION VALVE MAINTENANCE KIT 1"

HENKELMAN 0931220



LF Code: 5171528
GEV Code: 691574

VACUUM VALVE MAINTENANCE KIT 1"-1/4

HENKELMAN 0900870

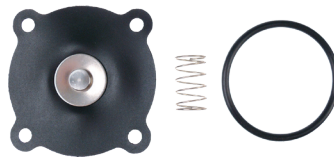


LF Code: 5171531
GEV Code: 691577

VENTILATION VALVE MAINTENANCE KIT 1"

1"

HENKELMAN 0931225



LF Code: 5171529
GEV Code: 691575

VENTILATION VALVE MAINTENANCE KIT 1-1/4"

HENKELMAN 0900872



LF Code: 5171510
GEV Code: 691573

VENTILATION VALVE MAINTENANCE KIT 2"

HENKELMAN 0931205



LF Code: 5171527
GEV Code: 691572

VACUUM VALVE MAINTENANCE KIT 2"

HENKELMAN 0931200



LF Code: 5149273
GEV Code: 691581

MEMBRANE \varnothing 80 mm

thickness 24 mm

HENKELMAN 0931405



LF Code: 5141097
GEV Code: 691582

MEMBRANE \varnothing 110mm H 34mm

thickness 34 mm

HENKELMAN 0931410



LF Code: 5171539
GEV Code: 691579

MEMBRANE \varnothing 48 mm

thickness 5 mm

HENKELMAN 0931226

HENKELMAN VACUUM MACHINES SPARES



LF Code: 5171542
GEV Code: 691580

MEMBRANE ø 50 mm

thickness 19 mm

HENKELMAN 0931400



LF Code: 5146837
GEV Code: 691578

MEMBRANE ø 90 mm

thickness 1 mm

HENKELMAN 0931206



LF Code: 5171686
GEV Code: 699266

SOLENOID VALVE SUPPORT

external ø 58 mm - internal ø 25 mm
height 8 mm

HENKELMAN 0287030



LF Code: 5171502
GEV Code: 691551

VENTILATION VALVE 1" 24VAC

HENKELMAN 0281005



LF Code: 5171513
GEV Code: 691555

VENTILATION VALVE 1-1/4 "

HENKELMAN 0900852



LF Code: 7138259
GEV Code:

VENTILATION VALVE 2"

HENKELMAN 0281025



LF Code: 5171501
GEV Code: 691550

VACUUM VALVE 1"

HENKELMAN 0281000



LF Code: 5171798
GEV Code: 704574

VACUUM VALVE 2"

application P2-75/85/95/Ti-
taan > 2015

HENKELMAN 0900802



LF Code: 5157718
GEV Code: 704573, S0107310

VACUUM VALVE 2"

application P2-75/P2-85

HENKELMAN 0900804



LF Code: 5171511
GEV Code: 691554

VACUUM VALVE ø 1"1/4 FF

HENKELMAN 0900850



LF Code: 5171809
GEV Code: 704578

SPRING CLAMP

HENKELMAN 0269065

HENKELMAN VACUUM MACHINES SPARES



LF Code: 5087356
GEV Code: 691542

OIL FILTER 63-100

dimensions \varnothing 78x78 mm

HENKELMAN 0939090



LF Code: 3160486
GEV Code: AS136321, S0904109

VACUUM PUMP OIL FILTER 40 m3

HENKELMAN 0939005, SAMMIC 2149078



LF Code: 7150808
GEV Code: 691534, S0071169

AIR EXHAUST FILTER \varnothing 34x51 mm 4 m3/h

BUSCH 0532140151, HENKELMAN 0939000, HENKELMAN 0939160



LF Code: 7107525
GEV Code: 691954

AIR EXHAUST FILTER \varnothing 35x73 mm 8 m3/h

BUSCH 0532140152, HENKELMAN 0939162



LF Code: 7103721
GEV Code: 691537

AIR EXHAUST FILTER \varnothing 50x120 mm 16 m3/h

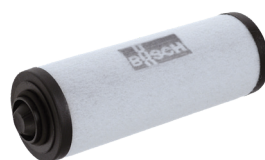
BUSCH 0532140154, HENKELMAN 0939003, HENKELMAN 0939163



LF Code: 7150809
GEV Code: 691538

AIR EXHAUST FILTER \varnothing 70x130mm 21 m3/h

BUSCH 0532140155, HENKELMAN 0939165, HENKELMAN 939165



LF Code: 5115026
GEV Code: 691539

AIR EXHAUST FILTER \varnothing 72x206 mm 63 m3/h

HENKELMAN 0939171



LF Code: 7112523
GEV Code: 691540

AIR EXHAUST FILTER \varnothing 72x248 mm 100 m3/h

BUSCH 0532140157, HENKELMAN 0939010, HENKELMAN 0939170



LF Code: 7134052
GEV Code: 691541

AIR EXHAUST FILTER \varnothing 72x375 mm 160 m3/h

HENKELMAN 0939015, HENKELMAN 0939175



LF Code: 5171654
GEV Code: 692473

FLANGE 60x60x14 mm

internal \varnothing 37 mm

HENKELMAN 0400730



LF Code: 5146142
GEV Code: 691955, S0037627

FLANGE 80x40x14 mm

internal \varnothing 54 mm

HENKELMAN 0400732



LF Code: 5171783
GEV Code: 704567

FUSE 5x20 mm 0.25A

HENKELMAN 0232011



LF Code: 5171786
GEV Code: 704568

FUSE 5x20 mm 0.5A

HENKELMAN 0232016



LF Code: 5171780
GEV Code: 704566

FUSE 5x20 mm 2.5A

HENKELMAN 0232017



LF Code: 5171790
GEV Code: 704569

FUSE 5x20 mm 5A

HENKELMAN 0232018

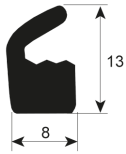


LF Code: 7123904
GEV Code: 692470

GUIDE 425x25x25 mm

HENKELMAN 0380710

HENKELMAN VACUUM MACHINES SPARES



LF Code: 5171824
GEV Code: 900964

LID GASKET 20 m

section 8x13 mm - silicone

HENKELMAN 0320209



LF Code: 5171636
GEV Code: 692067

LIP GASKET

external \varnothing 55 - internal \varnothing 45 mm
thickness 9 mm

HENKELMAN 0065068



LF Code: 5171664
GEV Code: 696559

LIP GASKET \varnothing 39x31x7 mm

for shaft \varnothing 32 mm

HENKELMAN 0065063

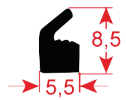


LF Code: 5168057
GEV Code: 903076

LID GASKET

section 5.5x8.5 mm
SOLD PER LINEAR METRE

HENKELMAN 0320215, HENKELMAN 0320231



LF Code: 9186067
GEV Code: 900809, S0090471

LID GASKET

section 5.5x8.5 mm
sold per linear metre

HENKELMAN



LF Code: 7104011
GEV Code: 570002

LID GASKET 10 m

section 5x7.5 mm

HENKELMAN 0320216

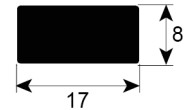


LF Code: 7114572
GEV Code: 570003

LID GASKET 12m

section 13x8 mm

HENKELMAN 0320208



LF Code: 5087406
GEV Code: 900806, 903034, S0300047

LID GASKET PER METRE

sezione 17x8 mm

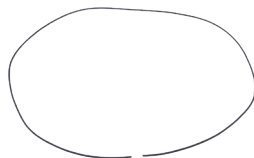
HENKELMAN 0320200, HENKELMAN 0320201



LF Code: 7126206
GEV Code: 696391

GASKET OF RUBBER \varnothing 25x5.5x2.5 mm

HENKELMAN 0065600



LF Code: 5171657
GEV Code: 696390

GASKET OF FOAM RUBBER \varnothing 3 mm

SALE PER LINEAR METRE

HENKELMAN 0320110



LF Code: 7112707
GEV Code: 532670

ORM GASKET 0400-30

ring thickness 3 mm - internal \varnothing 40 mm
of EPDM

HENKELMAN 0065729, HENKELMAN 0287000

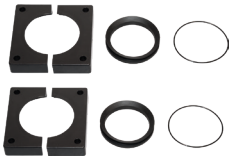


LF Code: 5171707
GEV Code: 704512, S3000900

SUCTION PIPE GASKET KIT 1"

HENKELMAN 0940000, HENKELMAN 940000

HENKELMAN VACUUM MACHINES SPARES



LF Code: 7117517
GEV Code: 704513, LF7117517,
S0064757

SUCTION PIPE GASKET KIT 2"

HENKELMAN 0940001



LF Code: 5171524
GEV Code: 691570

BUFFER OF RUBBER - 2PCS

model H200

HENKELMAN 0940205



LF Code: 5171525
GEV Code: 691571

BUFFER OF RUBBER H300

HENKELMAN 0940210



LF Code: 5171523
GEV Code: 691569

BUFFER OF RUBBER JUMBO

HENKELMAN 0940203



LF Code: 7116324
GEV Code: 532760

ORM GASKET 0130-15

ring thickness 1.5 mm - internal
ø 13 mm

HENKELMAN 0065739



LF Code: 7134512
GEV Code: 532672, S0062888

ORM GASKET 0250-20

ring thickness 2 mm - internal
ø 25 mm
of EPDM

HENKELMAN 0065741

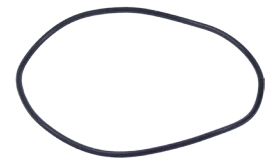


LF Code: 7137665
GEV Code: 532671

ORM GASKET 0340-30

ring thickness 3 mm - internal
ø 34 mm
of EPDM

HENKELMAN 0065732



LF Code: 5171422
GEV Code: 532692

ORM GASKET 0520-15

ring thickness 1.5 mm - internal
ø 52 mm
made of NBR

HENKELMAN 0065734



LF Code: 5161053
GEV Code: 691563

LEVEL GLASS THREAD 1"

HENKELMAN 0438015



LF Code: 5171518
GEV Code: 691561

LEVEL GLASS THREAD 1/2"

made of aluminium

HENKELMAN 0438000



LF Code: 7108662
GEV Code: 691562

LEVEL GLASS THREAD 3/4"

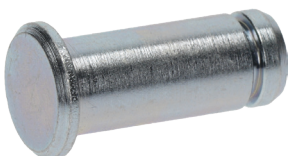
HENKELMAN 0438005, HENKELMAN
438005



LF Code: 5122752
GEV Code: 692066, S0091563

SHAFT ø 6x127 mm

HENKELMAN 0390500



LF Code: 5171704
GEV Code: 702319

PIN ø 10x27 mm

HENKELMAN 0065231



LF Code: 5171638
GEV Code: 692104

CONNECTION HEAD

HENKELMAN 0065225

HENKELMAN VACUUM MACHINES SPARES



LF Code: 5171309
GEV Code: 347038

PUSH-BUTTON PROTECTION COVER

HENKELMAN 0220042



LF Code: 7135291
GEV Code: 347036

START/STOP SWITCH 230V

2 NO contacts
mounting distance \varnothing 22 mm

HENKELMAN 0220017, HENKELMAN 220017



LF Code: 5171310
GEV Code: 347040

ROTARY PUSHBUTTON SWITCH 0-1

32A 400V
shaft 5x5 mm - 2 control positions
screw connection

HENKELMAN 0220067



LF Code: 7117728
GEV Code: 697921, S0093581, S0103381

FRONT PANEL FIXING KIT

made of plastic

HENKELMAN 0330116



LF Code: 5171794
GEV Code: 704571

PUSH-BUTTON

HENKELMAN 0220040



LF Code: 7150821
GEV Code: 301334

PUSH-BUTTON ON/OFF

for ASC control

HENKELMAN 0220007, HENKELMAN 220007



LF Code: 7150820
GEV Code: 347153, S0093906

PUSH BUTTON ON/OFF ABB

for standard operations
2 NO contacts
mounting hole \varnothing 22 mm

HENKELMAN 0220006, HENKELMAN 220006



LF Code: 7117729
GEV Code: 402098, S0061259

KEYBOARD FOR VACUUM PACKAGING MACHINES

for models Boxer/Marlin/Falcon/Atmoz/Polar

HENKELMAN 8000400, HENKELMAN 900102



LF Code: 7133725
GEV Code: 402099

KEYBOARD FOR VACUUM PACKAGING MACHINES

with frame

HENKELMAN 0900105, HENKELMAN 8000401



LF Code: 5161013
GEV Code: 402097

KEYBOARD FOR VACUUM PACKAGING MACHINE JUMBO

complete

HENKELMAN 0330105



LF Code: 5171643
GEV Code: 692168

KEYBOARD FOR VACUUM PACKAGING MACHINES

dimensions 289x91x20 mm

HENKELMAN 8000100



LF Code: 5171770
GEV Code: 704564

CONTROL KEYBOARD TOUCH NEO

version for steam sensor

HENKELMAN 8002915

HENKELMAN VACUUM MACHINES SPARES



LF Code: 5171773
GEV Code: 704565

CONTROL KEYBOARD TOUCH NEO

version with probe

HENKELMAN 8002916



LF Code: 7128688
GEV Code: 704563, S2003581

ELECTRONIC KEYBOARD FOR VACUUM PACKAGING MACHINES

dimensions 345x153 mm
version for steam sensor

HENKELMAN 0900055, HENKELMAN
900055



LF Code: 5106090
GEV Code: 404132

KEYBOARD FOR VACUUM PACKAGING MACHINE

dimensions 345x153 mm
complete with probe

HENKELMAN 8000712



LF Code: 5171815
GEV Code: 890264

VACUUM MAINTENANCE KIT

type V32 XL BA/Toucan BA

HENKELMAN 0940125



LF Code: 7150816
GEV Code: 890255

VACUUM MAINTENANCE KIT

the kit includes:

- 1 PTFE band 395x45 mm
- 1 PTFE band 350x15 mm
- 1 silicone gasket 2050 mm -
section 10x7 mm
- 1 silicone gasket 390 mm -
section 17x8 mm
- 1 aluminium wire 530 mm
- 1 soldering heating element
300x3.5 mm
- 1 oil tube VM32 250 ml

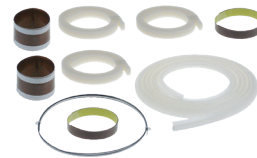
HENKELMAN 0940110, HENKELMAN
940110



LF Code: 5171709
GEV Code: 704514

MAINTENANCE KIT F2-60/F2-70

HENKELMAN 0940170



LF Code: 7121573
GEV Code: 890265

MAINTENANCE KIT FOR VACUUM MACHINES

type P2-40/50/75

HENKELMAN 0940160

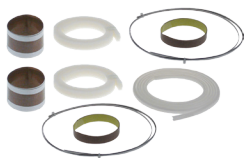


LF Code: 7125936
GEV Code: 890264

MAINTENANCE KIT FOR VACUUM MACHINES

type M46-M/F/P 52

HENKELMAN 0940130



LF Code: 7137431
GEV Code: 890263

MAINTENANCE KIT FOR VACUUM MACHINES

type F80/P80 LL

HENKELMAN 0940140, HENKELMAN
940140



LF Code: 5171710
GEV Code: 704515

MAINTENANCE KIT P2- 75LR/85VH/95LR

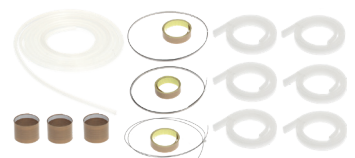
HENKELMAN 0940180



LF Code: 5171711
GEV Code: 704530

MAINTENANCE KIT P2-95VH/ P110-II

HENKELMAN 0940190



LF Code: 5171712
GEV Code: 704531

MAINTENANCE KIT P2-95VMH/ P110LVR

HENKELMAN 0940192

HENKELMAN VACUUM MACHINES SPARES



LF Code: 5171675
GEV Code: 697924

REPAIR KIT \varnothing 18x33 mm - 2PCS

HENKELMAN 0940207



LF Code: 5149525
GEV Code: 541528

VACUUM PRESSURE GAUGE \varnothing 40 mm

angle fitting \varnothing 5 mm
scale 0-1 bar

HENKELMAN 0810101



LF Code: 5171769
GEV Code: 704561

VACUUM PRESSURE GAUGE \varnothing 40 mm

pressure range -1/0bar

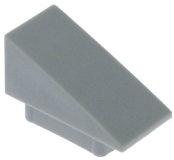
HENKELMAN 0810102



LF Code: 5132928
GEV Code: 347041

KNOB 0-1 FOR ROTARY SWITCH

HENKELMAN 0220065

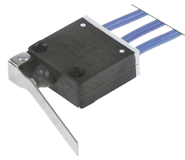


LF Code: 5171662
GEV Code: 696531

BAR FIXING TERMINAL

dimension 50x32x25 mm

HENKELMAN 0330093



LF Code: 5171305
GEV Code: 347033

MICROSWITCH FOR LID D2FW-G

250V 10A 1CO
cable length 380 mm

HENKELMAN 0900461



LF Code: 7109361
GEV Code: 347034

MICROSWITCH FOR LID D2FW-G

with cables length 170 mm

HENKELMAN 0900465



LF Code: 7119752
GEV Code: 347032

MICROSWITCH FOR LID D2FW-G

250V 10A 1NO
cable length 40 mm

HENKELMAN 0900460



LF Code: 7127651
GEV Code: 348087, S0304131

FLOATING MICROSWITCH

4 wires - 1NC 300V
fitting 1/8" - probe length 110 mm
mounting distance \varnothing 10 mm
cable length 1600 mm
with temperature probe

HENKELMAN 0220114



LF Code: 5171800
GEV Code: 704575

SPRING CLIP

HENKELMAN 0065232



LF Code: 7129449
GEV Code: 699265

NUT \varnothing 44mm

internal \varnothing 22.5 mm - thickness 10 mm

HENKELMAN 0287050, HENKELMAN 287050



LF Code: 5102335
GEV Code: 702709, S0096460

WASHER

HENKELMAN 0065105

HENKELMAN VACUUM MACHINES SPARES



LF Code: 1528001
GEV Code: LF1528001

COUNTERSUNK FLAT HEAD SCREWS M4x10

slotted - stainless steel
UNI 6109 - DIN 963 - ISO 2009

HENKELMAN 0042200



LF Code: 7126204
GEV Code: 697925

SCREW M4x20 mm

HENKELMAN 0065221



LF Code: 5171425
GEV Code: 560421

KNURLED SCREW M4

stainless steel
dimensions \varnothing 16x13 mm

HENKELMAN 0065010



LF Code: 5171667
GEV Code: 697920

COMPRESSION SPRING \varnothing 11x16 mm

thread \varnothing 1.5 mm

HENKELMAN 0080005



LF Code: 5171491
GEV Code: 691531

COMPRESSION SPRING \varnothing 15.2x52 mm

wire \varnothing 2 mm

HENKELMAN 0080020



LF Code: 5171470
GEV Code: 691530

COMPRESSION SPRING \varnothing 32.7x240 mm

wire \varnothing 5.2 mm

HENKELMAN 0080030



LF Code: 5171492
GEV Code: 691532

COMPRESSION SPRING \varnothing 46x340 mm

wire \varnothing 10 mm

HENKELMAN 0080035



LF Code: 5156906
GEV Code: 504449, S5101084

TRACTION SPRING \varnothing 70x340 mm

wire \varnothing 8 mm

HENKELMAN 0080107



LF Code: 5171515
GEV Code: 691558

CLAMP RH FOR RAIL MOUNTING

type TS

HENKELMAN 0900154



LF Code: 7124621
GEV Code: 691560

CLAMP RH FOR RAIL MOUNTING

type DS

HENKELMAN 0900172

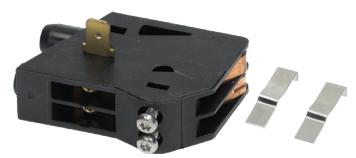


LF Code: 7155033
GEV Code: 691556, S0063163

CLAMP RH/LH FOR RAIL MOUNTING

DS table-top model

HENKELMAN 0330025



LF Code: 5171760
GEV Code: 704558

BAR FIXING CLAMP

left-hand installation position
application welding cutting

HENKELMAN 0900174

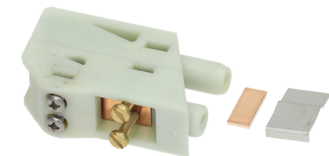


LF Code: 5171762
GEV Code: 704559

BAR FIXING CLAMP

right-hand installation position
application welding cutting

HENKELMAN 0900176



LF Code: 5171759
GEV Code: 704555

BAR FIXING CLAMP 8 mm

welding cylinder application

HENKELMAN 0900155



LF Code: 5171698
GEV Code: 701994

BAR FIXING CLAMP

fittings 2x Faston 6.3mm
type TS

HENKELMAN 0900158



LF Code: 5171514
GEV Code: 691557

BAR FIXING CLAMP LH

type TS

HENKELMAN 0900152

HENKELMAN VACUUM MACHINES SPARES



LF Code: 7124620
GEV Code: 691559

BAR FIXING CLAMP LH

type DS

HENKELMAN 0900170



LF Code: 5171453
GEV Code: 601498

PROTECTION GRID ø 220 mm

HENKELMAN 0939131



LF Code: 5115288
GEV Code: 691526

TAPE PTFE HEIGHT 15 mm

SALE PER LINEAR METRE

HENKELMAN 0305505



LF Code: 5109618
GEV Code: 693842, S0021932

TAPE PTFE HEIGHT 45 mm - PER METRE

HENKELMAN 0305015, HENKELMAN 0305515



LF Code: 7114460
GEV Code: 691528, S0071168

SHOCK ABSORBER FOR LID 0370N

overall length 155 mm - holes ø 6 mm

HENKELMAN 0810200



LF Code: 5171497
GEV Code: 691547

PNEUMATIC CYLINDER ø 110 mm

height 47 mm - shaft length 29 mm

HENKELMAN 0286015



LF Code: 5171500
GEV Code: 691549

PNEUMATIC CYLINDER ø 110 mm

shaft length 47 mm

HENKELMAN 0286020



LF Code: 7112708
GEV Code: 691548

PNEUMATIC CYLINDER ø 110 mm

height 47 mm - pin length 29 mm

HENKELMAN 0286017



LF Code: 5170725
GEV Code: 691544

PNEUMATIC CYLINDER ø 50 mm

height 25 mm

HENKELMAN 0286000



LF Code: 5171496
GEV Code: 691545

PNEUMATIC CYLINDER ø 80 mm

height 30 mm

HENKELMAN 0286005



LF Code: 7129450
GEV Code: 691546

PNEUMATIC CYLINDER ø 80 mm

height 48 mm

HENKELMAN 0286010, HENKELMAN 286010



LF Code: 5171417
GEV Code: 501612

VACUUM PUMP 0.1kW 220/240V 50/60Hz

type PB0003C000
flow rate 4 m³/h

HENKELMAN 0430100



LF Code: 7115685
GEV Code: 500990, S0300377

VACUUM PUMP 0.55kW 230V 50/60Hz

type J22VV506(7-0506)
flow rate 16m³/h

HENKELMAN 0431600



LF Code: 5171796
GEV Code: 704572

VACUUM PUMP 230V 50Hz 21 m³/h

HENKELMAN 0432000

HENKELMAN VACUUM MACHINES SPARES



LF Code: 7130369
GEV Code: 704570, S2000669

POWER CABLE

HENKELMAN 0201101, HENKELMAN 201101



LF Code: 7115418
GEV Code: 704532, S0096257

ELECTRICAL PLUG WITH FUSE HOLDER

HENKELMAN 0201102



LF Code: 5171671
GEV Code: 697923

SUCTION FITTING

external \varnothing 27 mm - internal \varnothing 5 mm
length 24 mm

HENKELMAN 0401020



LF Code: 5171682
GEV Code: 699264

HOSE-END FITTING 2"

hose-end fitting \varnothing 50 mm - length 71 mm

HENKELMAN 0262200



LF Code: 7160206
GEV Code: 704540, S0095659

WELDING BAR 362 mm

welding cutting

HENKELMAN 0300126



LF Code: 7134932
GEV Code: 704551, S0103145

WELDING BAR 466 mm

double welding

HENKELMAN 0300400, HENKELMAN 300400



LF Code: 5127494
GEV Code: 704536, LF5127494, S0102462

WELDING BAR 640 mm

double welding

HENKELMAN 0300570



LF Code: 5171752
GEV Code: 704552

WELDING BAR COMPLETE 1111 mm

double welding

HENKELMAN 0300550



LF Code: 5171753
GEV Code: 704553

WELDING BAR COMPLETE 1111 mm

welding cutting

HENKELMAN 0300551

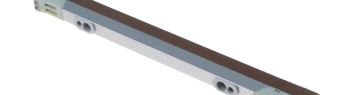


LF Code: 7111030
GEV Code: 691997, S0300698

WELDING BAR COMPLETE 280 mm

dimensions 280x34x16 mm - double welded

HENKELMAN 0300041



LF Code: 5171645
GEV Code: 692207

WELDING BAR COMPLETE 323 mm

dimensions 323x16x34 mm - double welded

HENKELMAN 0300110

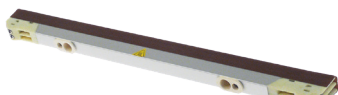


LF Code: 5171732
GEV Code: 704543

WELDING BAR COMPLETE 334 mm

double welding

HENKELMAN 0300265



LF Code: 7111579
GEV Code: 692469

WELDING BAR COMPLETE 355 mm

dimensions 355x15x31 mm - double welded

HENKELMAN 0300116

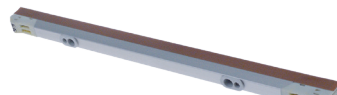


LF Code: 5171729
GEV Code: 704541

WELDING BAR COMPLETE 412 mm

double welding

HENKELMAN 0300221



LF Code: 7111944
GEV Code: 692103, S0300422

WELDING BAR COMPLETE 420 mm

dimensions 420x34x16 mm - double welded

HENKELMAN 0300210



LF Code: 5171730
GEV Code: 704542

WELDING BAR COMPLETE 422 mm

double welding

HENKELMAN 0300260

HENKELMAN VACUUM MACHINES SPARES



LF Code: 5171806
GEV Code: 704577

WELDING BAR COMPLETE 426 mm

8 mm welding version

HENKELMAN 0300620

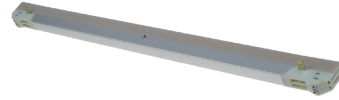


LF Code: 7122741
GEV Code: 691998

WELDING BAR COMPLETE 426 mm

dimensions 426x34x16 mm -
welding cutting

HENKELMAN 0300215



LF Code: 7134933
GEV Code: 697922, S0093407

WELDING BAR COMPLETE 466 mm

dimensions 466x15x30 mm

HENKELMAN 0300405, HENKELMAN
300405



LF Code: 7113193
GEV Code: 691816, S0300616

WELDING BAR COMPLETE 500 mm

dimensions 500x16x34 mm -
double welded

HENKELMAN 0300337



LF Code: 7101305
GEV Code: 692468, S0103351

WELDING BAR COMPLETE 520 mm

dimensions 520x15.5x31 mm

HENKELMAN 0300320



LF Code: 7138431
GEV Code:

WELDING BAR COMPLETE 525 mm

dimensions 525x16x35 mm -
double welded

HENKELMAN 0300332

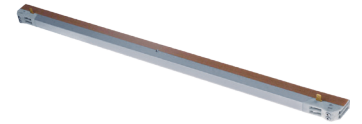


LF Code: 5171734
GEV Code: 704546

WELDING BAR COMPLETE 526 mm

welding cutting

HENKELMAN 0300325

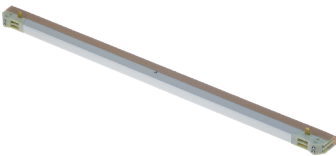


LF Code: 7114795
GEV Code: 691801, S0101280

WELDING BAR COMPLETE 560 mm

dimensions 560x33x15 mm -
double welded

HENKELMAN 0300510



LF Code: 5171699
GEV Code: 701995

WELDING BAR COMPLETE 565 mm

dimensions 565x15x33 mm -
welding cutting

HENKELMAN 0300515



LF Code: 5171641
GEV Code: 692126

WELDING BAR COMPLETE 605 mm

dimensions 605x32x15 mm

HENKELMAN 0300310



LF Code: 5171733
GEV Code: 704544

WELDING BAR COMPLETE 606 mm

welding cutting

HENKELMAN 0300315



LF Code: 5171756
GEV Code: 704554

WELDING BAR COMPLETE 640,5 mm

welding cutting

HENKELMAN 0300571

HENKELMAN VACUUM MACHINES SPARES



LF Code: 7113194
GEV Code: 704547, S0300617

WELDING BAR COMPLETE 820 mm

double welding

HENKELMAN 0300334



LF Code: 5171725
GEV Code: 704538

WELDING BAR COMPLETE 850 mm

welding cutting

HENKELMAN 0300581



LF Code: 7132114
GEV Code: 704537, S0104416

WELDING BAR COMPLETE 850 mm

double welding

HENKELMAN 0300580, HENKELMAN 300580



LF Code: 5171765
GEV Code: 704560

WELDING BAR RH/LH

contact socket version

HENKELMAN 0330020(L)



LF Code: 5110976
GEV Code: 572023, 572051, S0061252, S0071170

METAL WIRE \varnothing 1.1 mm - 1.25 m



LF Code: 5171450
GEV Code: 572022

METAL WIRE \varnothing 1.1 mm - 25 m

HENKELMAN 0305010



LF Code: 7133648
GEV Code: 572018

METAL WIRE \varnothing 1.1 mm - 3 m

HENKELMAN 0305009

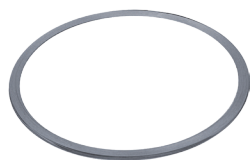


LF Code: 7112534
GEV Code: 572052

WELDING HEATING ELEMENT 3000 mm

width 5 mm - thickness 0.2 mm

HENKELMAN 0305019



LF Code: 5154430
GEV Code: 572024

WELDING HEATING ELEMENT - 25 m

width 3.5 - thickness 0.3 mm

HENKELMAN 0305000



LF Code: 7150815
GEV Code: 890254

VACUUM MAINTENANCE KIT

the kit includes:
1 PTFE band 310x46 mm
1 PTFE band 270x15 mm
1 silicone gasket 300 mm - section 17x8 mm
1 soldering heating element 430x1.1 mm
1 oil tube V32 60 ml

HENKELMAN 0940100, HENKELMAN 940100



LF Code: 7150817
GEV Code: 890256

VACUUM MAINTENANCE KIT

the kit includes:
1 PTFE band 490x45 mm
1 PTFE band 430x15 mm
1 silicone gasket 2030 mm - section 10x7 mm
1 silicone gasket 425 mm - section 17x8 mm
1 soldering heating element 300x3.5 mm
1 oil tube VM32 300 ml

HENKELMAN 09402560, HENKELMAN 940115



LF Code: 7102991
GEV Code: 890262, 890343, S0091565, S2003447

VACUUM MAINTENANCE KIT

the kit includes: - 1 PTFE band 460x45 mm - 1 PTFE band 430x15 mm - 1 silicone gasket 2040 mm - section 10x7 mm - 1 silicone gasket 450 mm - section 17x8 mm - 1 aluminium wire 600 mm - 1 soldering heating element 580x3.5 mm - 1 oil tube VM32 500 ml

HENKELMAN 0940121, HENKELMAN 940120

HENKELMAN VACUUM MACHINES SPARES



LF Code: 7150810
GEV Code: 572016, S0008886,
S0104751

WELDING HEATING ELEMENT 3.5x3000 mm

HENKELMAN 0305003, HENKELMAN
305003



LF Code: 7111720
GEV Code: LF7111720

TAPE PTFE 3000 MM

HENKELMAN 0305513



LF Code: 5135059
GEV Code: 572053

WELDING HEATING ELEMENT 3000 mm

width 8 mm - thickness 0.2
mm

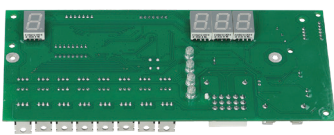
HENKELMAN 0305025



LF Code: 5171300
GEV Code: 378790

ELECTRONIC CONTROLLER

HENKELMAN 0220115

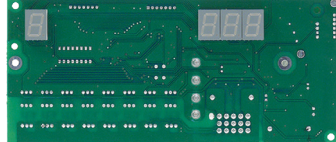


LF Code: 7111437
GEV Code: 402093

ELECTRONIC BOARD FOR VACUUM PACKAGING MACHINES

for models B35 / B-M 42/42XL

HENKELMAN 0230040

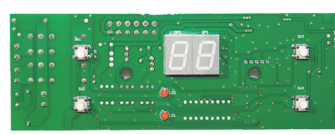


LF Code: 7130063
GEV Code: 402095

ELECTRONIC BOARD FOR VACUUM PACKAGING MACHINES

for models B35/B-M 42/42XL
with probe

HENKELMAN 0230042, HENKELMAN
230042



LF Code: 7110312
GEV Code: 402092

ELECTRONIC BOARD FOR VACUUM PACKAGING MACHINES JUMBO

HENKELMAN 0230036



LF Code: 5171420
GEV Code: 523025

LOCKING RING

stainless steel - external \varnothing 24
mm
DIN 471

HENKELMAN 0065260



LF Code: 7137491
GEV Code: 692065, S0091564

LOCKING RING

stainless steel - internal \varnothing 6 mm
DIN 471

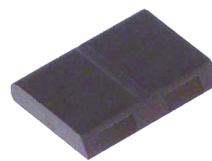
HENKELMAN 0065250



LF Code: 5171702
GEV Code: 702225

ELASTIC RING \varnothing 34 mm

HENKELMAN 0939129

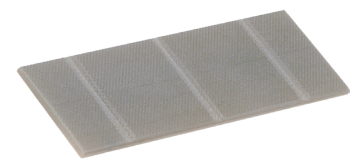


LF Code: 5171625
GEV Code: 691992

MOTOR FLAP FOR VACUUM PUMP

dimensions 20x14x3 mm

HENKELMAN 0939056



LF Code: 5171619
GEV Code: 691585

MOTOR FLAP 100x40x4 mm

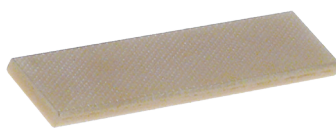
HENKELMAN 0939065



LF Code: 5171637
GEV Code: 692070

MOTOR FLAP 28x14x3 mm

HENKELMAN 0939054



LF Code: 5171612
GEV Code: 691584

ROTOR FLAP 70x18x4 mm

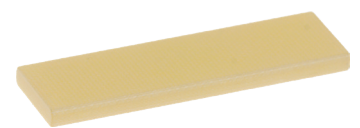
HENKELMAN 0939060



LF Code: 5171700
GEV Code: 702224

ROTOR FLAP 27x18x4 mm

HENKELMAN 0939058

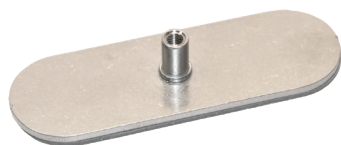


LF Code: 5171703
GEV Code: 702226

ROTOR FLAP 60x18x4 mm

HENKELMAN 0939059

HENKELMAN VACUUM MACHINES SPARES



LF Code: 7122691
GEV Code: 689016

FASTENING PLATE 74x25 mm

HENKELMAN 0390527, HENKELMAN
0900744, HENKELMAN 0900745



LF Code: 5171460
GEV Code: 690977

SUPPORT OF ALUMINIUM FOR GASKET 280 mm

HENKELMAN 0380702



LF Code: 5171621
GEV Code: 691587

BAR FIXING SUPPORT

dimensions 365x25x50 mm -
made of aluminium

HENKELMAN 0380590



LF Code: 5171519
GEV Code: 691565

THREADED LOCKING SCREW 1/4"

HENKELMAN 0939105



LF Code: 7155121
GEV Code: 691564

THREADED LOCKING SCREW 1/8"

HENKELMAN 0939102



LF Code: 5171522
GEV Code: 691568

THREADED CAP OF PLASTIC 1"

HENKELMAN 0939115



LF Code: 5171521
GEV Code: 691566

THREADED CAP OF PLASTIC 1/2"

HENKELMAN 0939110



LF Code: 7108661
GEV Code: 691567

THREADED CAP OF PLASTIC 3/4"

HENKELMAN 0939113



LF Code: 7117727
GEV Code: 692142

PANEL FOR VACUUM PACKAGING MACHINES

for models 200/220

HENKELMAN 0065110, HENKELMAN
0330120, HENKELMAN 0330144



LF Code: 5171665
GEV Code: 696964

CONTROL PANEL FOR VACUUM PACKAGING MACHINE

dimensions 258x55 mm

HENKELMAN 8010100



LF Code: 7112709
GEV Code: 699267, S0088055

FASTON M 6.3 mm

hole \varnothing 4 mm

HENKELMAN 0200090

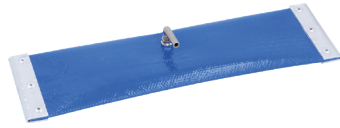
HENKELMAN VACUUM MACHINES SPARES



LF Code: 5171437
GEV Code: 572002

AIR CHAMBER 330x85 mm

HENKELMAN 0301330



LF Code: 5171428
GEV Code: 572001

AIR CHAMBER 370x85 mm

HENKELMAN 0301310



LF Code: 5171438
GEV Code: 572003

AIR CHAMBER 370x85 mm

HENKELMAN 0301370



LF Code: 5171439
GEV Code: 572004

AIR CHAMBER 390x85 mm

HENKELMAN 0301390



LF Code: 7134511
GEV Code: 572005

AIR CHAMBER 410x85 mm

HENKELMAN 0301410, HENKELMAN
301410



LF Code: 5171440
GEV Code: 572006

AIR CHAMBER 440x85 mm

HENKELMAN 0301440



LF Code: 5171441
GEV Code: 572007

AIR CHAMBER 490x85 mm

HENKELMAN 0301490



LF Code: 7137534
GEV Code: 572008

AIR CHAMBER 550x85 mm

HENKELMAN 0301550



LF Code: 7127487
GEV Code: 572009

AIR CHAMBER 580x85 mm

HENKELMAN 0301580



LF Code: 5171442
GEV Code: 572010

AIR CHAMBER 620x85 mm

HENKELMAN 0301620



LF Code: 5171443
GEV Code: 572011

AIR CHAMBER 660x85 mm

HENKELMAN 0301660



LF Code: 7134510
GEV Code: 572012

AIR CHAMBER 740x85 mm

HENKELMAN 0301740, HENKELMAN
301740



LF Code: 5171444
GEV Code: 572013

AIR CHAMBER 800x85 mm

HENKELMAN 0301800



LF Code: 5171445
GEV Code: 572014

AIR CHAMBER 850x85 mm

HENKELMAN 0301850



LF Code: 7127047
GEV Code: 570202

CLOTH RUBBER TUBE \varnothing 6/13 mm

sale per linear metre

HENKELMAN 0322052



LF Code: 5171660
GEV Code: 696530

AIR NOZZLE \varnothing 5 mm

external \varnothing 8 mm
height 50 mm - length 28 mm
thread size M8x0.75

HENKELMAN 0390614

HENKELMAN VACUUM MACHINES SPARES



LF Code: 5155276
GEV Code: 402086

TRANSFORMER

primary voltage 230/400V
50/60Hz
secondary voltage 0-9/0-
24VAC 64.5VA
screw terminal block

HENKELMAN 0223011, HENKELMAN
223011

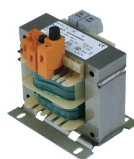


LF Code: 7111234
GEV Code: 403683, S0096328

TRANSFORMER 230V-12,5V

primary voltage 230V
secondary voltage 12,5V 562VA
versione Mini Jumbo/ Jumbo35
/ Boxer35

HENKELMAN 0223017, HENKELMAN
0223089



LF Code: 5171351
GEV Code: 402080

TRANSFORMER 220/380- 20VAC

primary voltage 220/380V
50/60Hz
secondary voltage 0-20VAC
600VA
screw terminal block

HENKELMAN 0223026



LF Code: 5114589
GEV Code: 402081

TRANSFORMER 220/380- 21.4VAC

primary voltage 220/380V
50/60Hz
secondary voltage 0-21.4VAC
900VA
screw terminal block

HENKELMAN 0223032



LF Code: 7127094
GEV Code: 403684

TRANSFORMER 220V-15V

primary voltage 220V
secondary voltage 15V 700VA
version Boxer 42

HENKELMAN 0223019, HENKELMAN
223019



LF Code: 7110729
GEV Code: 403948

TRANSFORMER 230V-24V

primary voltage 230VAC 50/60
Hz
secondary voltage 24VAC 30VA
secondary current 1.25 A

HENKELMAN 0223004



LF Code: 5171399
GEV Code: 402084

TRANSFORMER 380/400- 24VAC

primary voltage 380/400V
50/60Hz
secondary voltage 0-24VAC
1150VA
screw terminal block

HENKELMAN 0223049

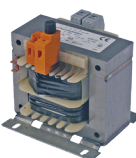


LF Code: 5155277
GEV Code: 402082

TRANSFORMER 380/400- 33.1VAC

primary voltage 380/420V
50/60Hz
secondary voltage 0-33.1VAC
1150VA
screw terminal block

HENKELMAN 0223035



LF Code: 5171363
GEV Code: 402083

TRANSFORMER 380/400- 46VAC

primary voltage 380/400V
50/60Hz
secondary voltage 0-46VAC
1150VA
screw terminal block

HENKELMAN 0223042



LF Code: 5141915
GEV Code: 699263, S0095325

NON-RETURN VALVE

external \varnothing 7 mm - internal \varnothing 5
mm - length 39.5 mm

HENKELMAN 0810110



LF Code: 5171653
GEV Code: 692471

NON-RETURN VALVE

external \varnothing 10 mm - internal \varnothing 8
mm - length 39.5 mm

HENKELMAN 0810112



LF Code: 7138880
GEV Code:

MOTOR COOLING FAN \varnothing 206 mm

HENKELMAN 0939130



GEV Großküchen-Ersatzteil-Vertrieb GmbH

Gadastr. 4
85232 Bergkirchen - Germany
T +49 8142 6522-50
info.ger@repagroup.com
www.gev-online.com

LF S.p.A. a socio unico

Via Voltri 80
47522 Cesena FC - Italy
T +39 0547 341111
info.it@repagroup.com
www.lfspareparts724.com

EPGC S.a.s.

13 Rue des Forts
59960 Neuville en Ferrain - France
T +33 3 20250621
france@repagroup.com
www.epgc.com

Commercial Catering Spares Ltd.

Block C - Axis Point Hill Top Road
Heywood - Lancashire - OL10 2RQ - UK
T +44 1706 621 155
info@ccspares.co.uk
www.ccspares.co.uk

Atel S.r.l. a socio unico

Via Selvuzzis 51/2
33100 Udine UD - Italy
T +39 0432 602095
info@atelitalia.com
www.atelitalia.com

www.repagroup.com