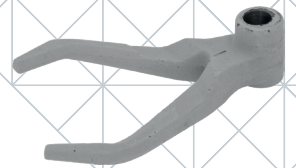
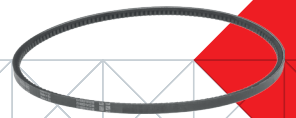
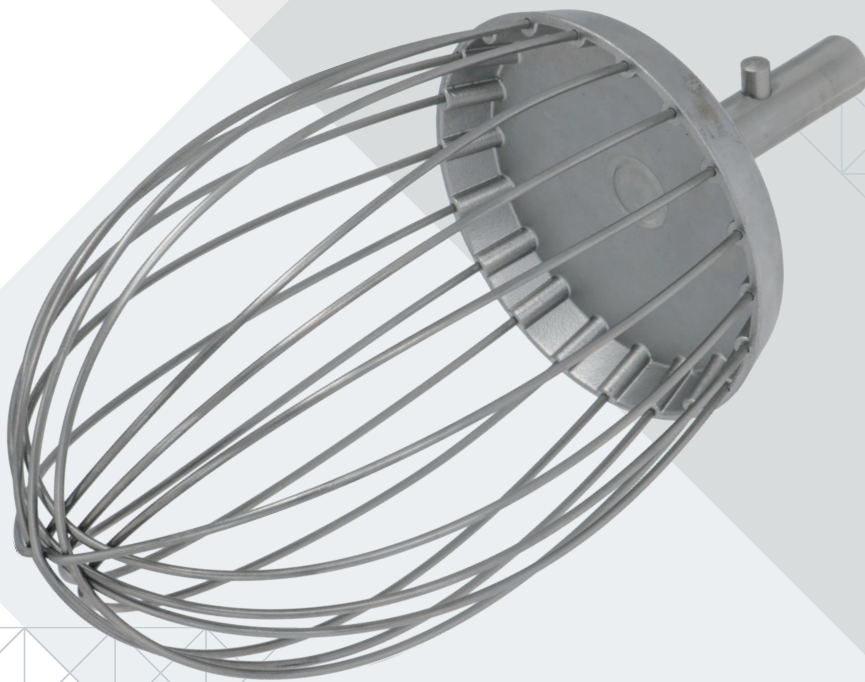




# VARIMIXER

*Selection of spare parts  
for professional mixers*



# BEARINGS



LF Code: 5132431  
GEV Code: 523113  
OEM p/n: R15-105

## BEARING 6005-2HRS-C3 FAG

outer  $\varnothing$  47 mm - inner  $\varnothing$  25 mm - thickness 12 mm



LF Code: 9063057  
GEV Code: 523122  
OEM p/n: R20-100

## BEARING 6006-2RSR-C3 FAG

outer  $\varnothing$  55 mm - inner  $\varnothing$  30 mm - thickness 13 mm



LF Code: 9063056  
GEV Code: 523121  
OEM p/n: R40-100

## BEARING 6008-2RSR-C3 FAG

outer  $\varnothing$  68 mm - inner  $\varnothing$  40 mm - thickness 15 mm



LF Code: 9063058  
GEV Code: 523123  
OEM p/n: R15-103

## BEARING 6010-2RSR-C3

outer  $\varnothing$  80 mm - inner  $\varnothing$  50 mm - thickness 16 mm



LF Code: 9063060  
GEV Code: 523125  
OEM p/n: R100-100

## BEARING 6011-2RSR-C3 FAG

outer  $\varnothing$  90 mm - inner  $\varnothing$  55 mm - thickness 18 mm



LF Code: 9063055  
GEV Code: 523120  
OEM p/n: R20-97

## BEARING 6205-C-2HRS-C3 FAG

outer  $\varnothing$  52 mm - inner  $\varnothing$  25 mm - thickness 15 mm



LF Code: 9063059  
GEV Code: 523124  
OEM p/n: R40-97

## BEARING 6208-2RSR-C3 FAG

outer  $\varnothing$  80 mm - inner  $\varnothing$  40 mm - thickness 18 mm



LF Code: 9063061  
GEV Code: 523126  
OEM p/n: R60-99

## BEARING 6209-C-2HRS-C3 FAG

outer  $\varnothing$  85 mm - inner  $\varnothing$  45 mm - thickness 19 mm



LF Code: 9063062  
GEV Code: 523127  
OEM p/n: R100-97

## BEARING 6211-C-2HRS-C3 FAG

outer  $\varnothing$  100 mm - inner  $\varnothing$  55 mm - thickness 21 mm

# BEARINGS



LF Code: 9063054  
 GEV Code: 523119  
 OEM p/n: R30-101Z

## NEEDLE BEARING BK2518-RS

outer  $\varnothing$  32 mm - inner  $\varnothing$  25 mm - thickness 18 mm  
 complete with bushing and gasket



LF Code: 9063050  
 GEV Code: 523115  
 OEM p/n: R40-101Z

## NEEDLE BEARING COMPLETE BK3016

outer  $\varnothing$  37 mm - inner  $\varnothing$  30 mm - thickness 16 mm  
 complete with bushing and gasket



LF Code: 9063064  
 GEV Code: 523129  
 OEM p/n: R100-101Z

## NEEDLE BEARING BK3520-A

outer  $\varnothing$  42 mm - inner  $\varnothing$  36 mm - thickness 20 mm  
 complete with bushing and gasket



LF Code: 9063065  
 GEV Code: 523130  
 OEM p/n: R100-101

## NEEDLE BEARING BK3520-A

outer  $\varnothing$  22 mm - inner  $\varnothing$  36 mm - thickness 20 mm  
 complete with bushing



LF Code: 9063053  
 GEV Code: 523118  
 OEM p/n: R20-96

## NEEDLE BEARING HK2016-2RS

outer  $\varnothing$  26 mm - inner  $\varnothing$  20 mm - thickness 16 mm  
 complete with bushing LR17



LF Code: 9063063  
 GEV Code: 523128  
 OEM p/n: R30-96

## NEEDLE BEARING HK2820-2RS

outer  $\varnothing$  35 mm - inner  $\varnothing$  28 mm - thickness 20 mm  
 complete with bushing



LF Code: 9063049  
 GEV Code: 523114  
 OEM p/n: R40-96

## NEEDLE BEARING HK 3516-2RS

outer  $\varnothing$  42 mm - inner  $\varnothing$  35 mm - thickness 16 mm  
 complete with bushing



LF Code: 9063052  
 GEV Code: 523117  
 OEM p/n: R60-96

## NEEDLE BEARING HK3520-2RS

outer  $\varnothing$  42 mm - inner  $\varnothing$  35 mm - thickness 20 mm  
 complete with bushing  $\varnothing$  35x30 mm



LF Code: 9063051  
 GEV Code: 523116  
 OEM p/n: R100-96

## NEEDLE BEARING HK4520-2RS

outer  $\varnothing$  52 mm - inner  $\varnothing$  45 mm - thickness 20 mm  
 complete with bushing

# BELTS



LF Code: 9062123  
 GEV Code: 560693  
 OEM p/n: R20-91

**TOOTHED BELT R20-91 29X10X1050 MM**



LF Code: 9062116  
 GEV Code: 560686  
 OEM p/n: R27-91

**TOOTHED BELT R27-91 29X9X932 MM**



LF Code: 9062119  
 GEV Code: 560689  
 OEM p/n: R40-90Z

**TOOTHED BELT R40-90Z 11X7X710MM 3 PCS**



LF Code: 9062120  
 GEV Code: 560690  
 OEM p/n: R60-90Z

**TOOTHED BELT R60-90Z 10X8X850MM 3 PCS**



LF Code: 9062117  
 GEV Code: 560687  
 OEM p/n: R60-91

**TOOTHED BELT R60-91 38X11X1042 MM**



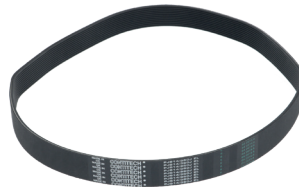
LF Code: 9062121  
 GEV Code: 560691  
 OEM p/n: RN20-90

**TOOTHED BELT RN20-90 20X5X880 MM**



LF Code: 9062122  
 GEV Code: 560692  
 OEM p/n: R100-90Z

**TOOTHED BELT XPZ1000 - 3 PCS**



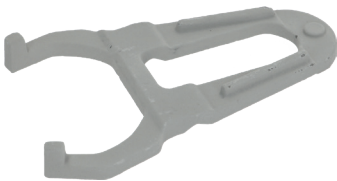
LF Code: 9062125  
 GEV Code: 560695  
 OEM p/n: W40P-90.1

**BELT POLY 914J H28 11 GROOVES**



LF Code: 9062118  
 GEV Code: 560688  
 OEM p/n: AR005-090-TD001

**BELT POLY V 559J H18 7 GROOVES**



LF Code: 9062124  
 GEV Code: 560694  
 OEM p/n: R20-19

**BELT-TIGHTENER FORK**

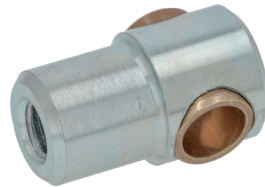
# BUSHINGS CAMS CIRCLIPS



LF Code: 9704015  
GEV Code: 702026  
OEM p/n: 56SN20-21.1

## PROTECTION BUSHING Ø 25 MM

thread M13 - NEW MODEL



LF Code: 9704016  
GEV Code: 702025  
OEM p/n: R15-65E

## LIFT BUSHING



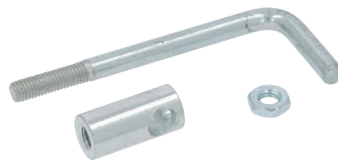
LF Code: 9704017  
GEV Code: 702024  
OEM p/n: STA6580

## THREADED BUSHING M5



LF Code: 9704018  
GEV Code: 702023  
OEM p/n: STA2505

## BUSHING FOR PULLEY PIN MB0610DU



LF Code: 5132240  
GEV Code: 560685  
OEM p/n: RN20-65.1Z

## BUSHING FOR LIFT PIN



LF Code: 9707027  
GEV Code: 701999  
OEM p/n: 56SN30-23

## LIFT CAM FOR SAFETY GRID Ø 30 MM

inner ø 8 mm



LF Code: 9707026  
GEV Code: 702022  
OEM p/n: 56SN20-22.1

## LIFT CAM FOR SAFETY GRID Ø 35 MM

inner ø 6 mm  
complete with grub screw



LF Code: 9707028  
GEV Code: 701998  
OEM p/n: 56SN30-22

## CAM FOR MICROSWITCH Ø 35 MM

inner ø 8 mm  
complete with grub screw



LF Code: 9258001  
GEV Code: 551537  
OEM p/n: STA3514 - STA6204

## STOP RING J-52

zinc-plated iron alloy - outer ø 57.2 mm  
UNI 7437 - DIN 472

# FITTINGS FLANGES GASKETS



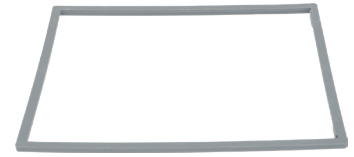
LF Code: 9349001  
GEV Code: 702035  
OEM p/n: R15-156

**FITTING FOR PULLEY 1/2" M-1/8" F**



LF Code: 9161001  
GEV Code: 703016  
OEM p/n: R15-17.1

**FLANGE FOR MOTOR PULLEY**



LF Code: 9186068  
GEV Code: 703015  
OEM p/n: RN20-207

**GASKET FOR UPPER TURRET 270X250MM**



LF Code: 9186070  
GEV Code: 703013  
OEM p/n: R60-209.1

**COLLAR GASKET RUBBER**

outer  $\varnothing$  92 mm - inner  $\varnothing$  60 mm - thickness 16 mm



LF Code: 9186071  
GEV Code: 703012  
OEM p/n: R100-209

**COLLAR GASKET RUBBER**

outer  $\varnothing$  110 mm - inner  $\varnothing$  60 mm - ring thickness 16.5 mm



LF Code: 9186072  
GEV Code: 703011  
OEM p/n: W20-209

**GASKET - BAYONET FITTING**

outer  $\varnothing$  72 mm - inner  $\varnothing$  40 mm - thickness 10 mm



LF Code: 9186073  
GEV Code: 703010  
OEM p/n: W40-209

**MOTOR PULLEY GASKET**

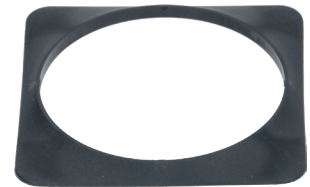
outer  $\varnothing$  95 mm - inner  $\varnothing$  54 mm - thickness 14 mm



LF Code: 9186069  
GEV Code: 703014  
OEM p/n: R15-211

**CONICAL GASKET FOR HUB - RUBBER**

outer  $\varnothing$  105 mm - inner  $\varnothing$  75 mm



LF Code: 9186074  
GEV Code: 703009  
OEM p/n: RN20-211

**RUBBER GASKET 91X91 MM**

central hole  $\varnothing$  79 mm

# GEARS GREASES



LF Code: 9212082  
GEV Code: 703000  
OEM p/n: R20-9

## GEAR FOR DRIVE SHAFT Ø 85 MM

inner ø 25 mm - 26x teeth - total height 43.5 mm



LF Code: 9212076  
GEV Code: 703006  
OEM p/n: R20-32

## LOWER PINION Ø 75 MM

inner ø 22 mm - 34x teeth



LF Code: 9212079  
GEV Code: 703003  
OEM p/n: R30-32

## LOWER PINION Ø 80 MM

inner ø 28 mm - 23x teeth



LF Code: 9212081  
GEV Code: 703001  
OEM p/n: R60-32.1

## LOWER PINION Ø 90 MM

inner ø 39 mm - 22x teeth



LF Code: 9212077  
GEV Code: 703005  
OEM p/n: R20-31

## UPPER PINION Ø 55 MM

inner ø 23 mm - 15x teeth



LF Code: 9212078  
GEV Code: 703004  
OEM p/n: R30-31

## UPPER PINION Ø 65 MM

inner ø 28 mm - 16x teeth



LF Code: 9212074  
GEV Code: 703008  
OEM p/n: AR60-31

## UPPER PINION Ø 70 MM

inner ø 32 mm - 16x teeth



LF Code: 9212075  
GEV Code: 703007  
OEM p/n: R40-31

## UPPER PINION Ø 70 MM

inner ø 30 mm - 17x teeth



LF Code: 9212080  
GEV Code: 703002  
OEM p/n: R40-32

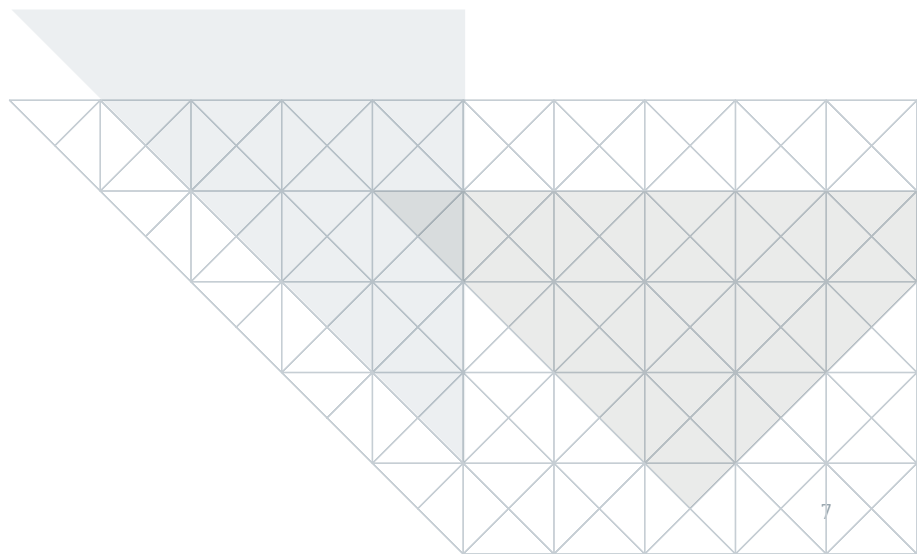
## UPPER PINION Ø 90 MM

inner ø 30 mm - 22x teeth



LF Code: 9120003  
GEV Code: 703017  
OEM p/n: R15-142

## GREASE FOR STAND MIXER



# IRONMONGERY PINS



LF Code: 9528053  
GEV Code: 551536  
OEM p/n: STA6204

**SPLIT PIN Ø 2 MM FOR PIN**



LF Code: 9250013  
GEV Code: 530992  
OEM p/n: R20-275

**SPRING FOR BELT TIGHTENER Ø 23X70 MM**

inner ø 55 mm - thickness 8 mm



LF Code: 9528051  
GEV Code: 560696  
OEM p/n: STA2011

**MOTOR SHAFT KEY 5X5X57 MM**



LF Code: 9528050  
GEV Code: 560697  
OEM p/n: STA2030

**LOCKING KEY FOR PULLEY 8X7X20 MM**



LF Code: 9324007  
GEV Code: 703020  
OEM p/n: R20-285

**PIN 6X60 MM**



LF Code: 9324006  
GEV Code: 703018  
OEM p/n: R30-285

**MOTOR PULLEY PIN Ø 6X85 MM**



LF Code: 9324009  
GEV Code: 560699  
OEM p/n: R60-285

**MOTOR PULLEY PIN Ø 6X95 MM**



LF Code: 9324014  
GEV Code: 702037  
OEM p/n: STA6251

**PIN 8X30 MM**



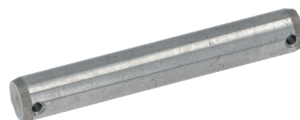
LF Code: 9324010  
GEV Code: 560700  
OEM p/n: AR31-305

**THREADED PIN M8X120 MM**



LF Code: 9324015  
GEV Code: 702036  
OEM p/n: R30-79

**HOOK PIN Ø 9X45 MM**



LF Code: 9324008  
GEV Code: 560698  
OEM p/n: RN100-67

**LIFT PIN Ø 12X80 MM**



LF Code: 9324013  
GEV Code: 702038  
OEM p/n: STA5690

**FASTENING PIN M8X25 MM**



# PINS PUSH BUTTONS SUPPORTS



LF Code: 9324012  
GEV Code: 702039  
OEM p/n: R15-46Z

## TOOTHED PIN FOR RACK+PINION M15X220 MM

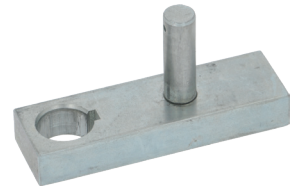
complete with nut and circlip



LF Code: 9324011  
GEV Code: 702040  
OEM p/n: R30-33Z

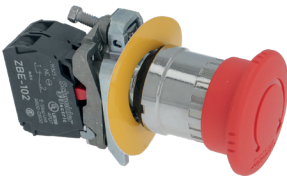
## BAYONET DRIVE SHAFT KIT

kit including: 1 circlip - 1 key



LF Code: 9324005  
GEV Code: 703019  
OEM p/n: RN20-63ME

## SUPPORT FOR LIFT PIN



LF Code: 9319110  
GEV Code: 360829  
OEM p/n: AR31-174.5

## MUSHROOM PUSH BUTTON - STOP - RED

SCHNEIDER - 2 contacts normally closed -  
mounting template ø 22 mm



LF Code: 9319108  
GEV Code: 348334  
OEM p/n: AR31-174.3

## STOP BUTTON RED Ø 28 MM

SCHNEIDER - 1 contact normally closed -  
mounting template ø 22 mm



LF Code: 9319109  
GEV Code: 360830  
OEM p/n: AR31-174.2

## START BUTTON GREEN Ø 28 MM

SCHNEIDER - 1 contact normally closed -  
mounting template ø 22 mm



LF Code: 9391007  
GEV Code: 702034  
OEM p/n: R27-16M4

## LOWER FORK 200X150X5 MM



LF Code: 9391009  
GEV Code: 702033  
OEM p/n: R30-69Z

## SUPPORT TIE ROD COMPLETE 170 MM



LF Code: 9391010  
GEV Code: 702032  
OEM p/n: R60-69Z

## SUPPORT TIE ROD COMPLETE 250 MM



# WATERTIGHT SEALS WHISKS



LF Code: 9391011  
GEV Code: 702031  
OEM p/n: 56SN20-24

**SPACER FOR BUSHING Ø 30X6X5 MM**



LF Code: 9391012  
GEV Code: 702030  
OEM p/n: R40-34

**NYLON SPACER Ø 50 MM**

inner ø 40.5 mm - thickness 7 mm



LF Code: 9391013  
GEV Code: 702029  
OEM p/n: R100-37

**NYLON SPACER Ø 65 MM**

inner ø 55 mm - thickness 8 mm



LF Code: 9453008  
GEV Code: 702027  
OEM p/n: R30-108R

**SEALING GASKET FOR BEARING**

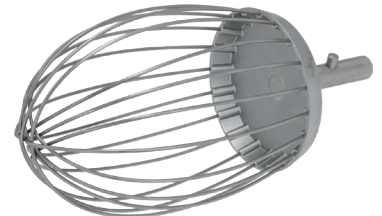
outer ø 32 mm - inner ø 25 mm - thickness 4 mm



LF Code: 9453007  
GEV Code: 702028  
OEM p/n: R100-108R

**SEALING GASKET FOR BEARING**

outer ø 44 mm - inner ø 34 mm - thickness 4 mm



LF Code: 9740104  
GEV Code: 710076  
OEM p/n: CR10-28M

**METAL WHISK - WIRE Ø 2,5 MM**

total height incl. connection 290 mm



GEV Großküchen-Ersatzteil-Vertrieb GmbH  
Gadastr. 4  
85232 Bergkirchen • Germany  
[www.gev-online.com](http://www.gev-online.com)  
Tel.: +49 8142 6522-50  
[order@gev-online.com](mailto:order@gev-online.com)

LF SpA a socio unico  
Via Voltri 80  
47522 Cesena FC • Italy  
[www.lfspareparts724.com](http://www.lfspareparts724.com)  
Tel.: +39 0547 34 11 11  
[info@lfspareparts.com](mailto:info@lfspareparts.com)